

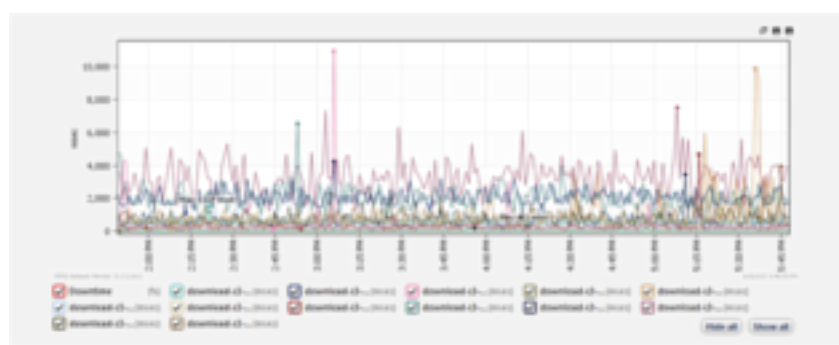
# WORK SMARTER, START MONITORING

PRTG monitors your whole IT infrastructure 24/7 and alerts you to problems before users even notice. Find out more about the monitoring software that helps system administrators work smarter, faster, better.

**Trusted every day by 200,000 admins around the globe**

**Bandwidth monitoring: Find out who is using your network, for what**

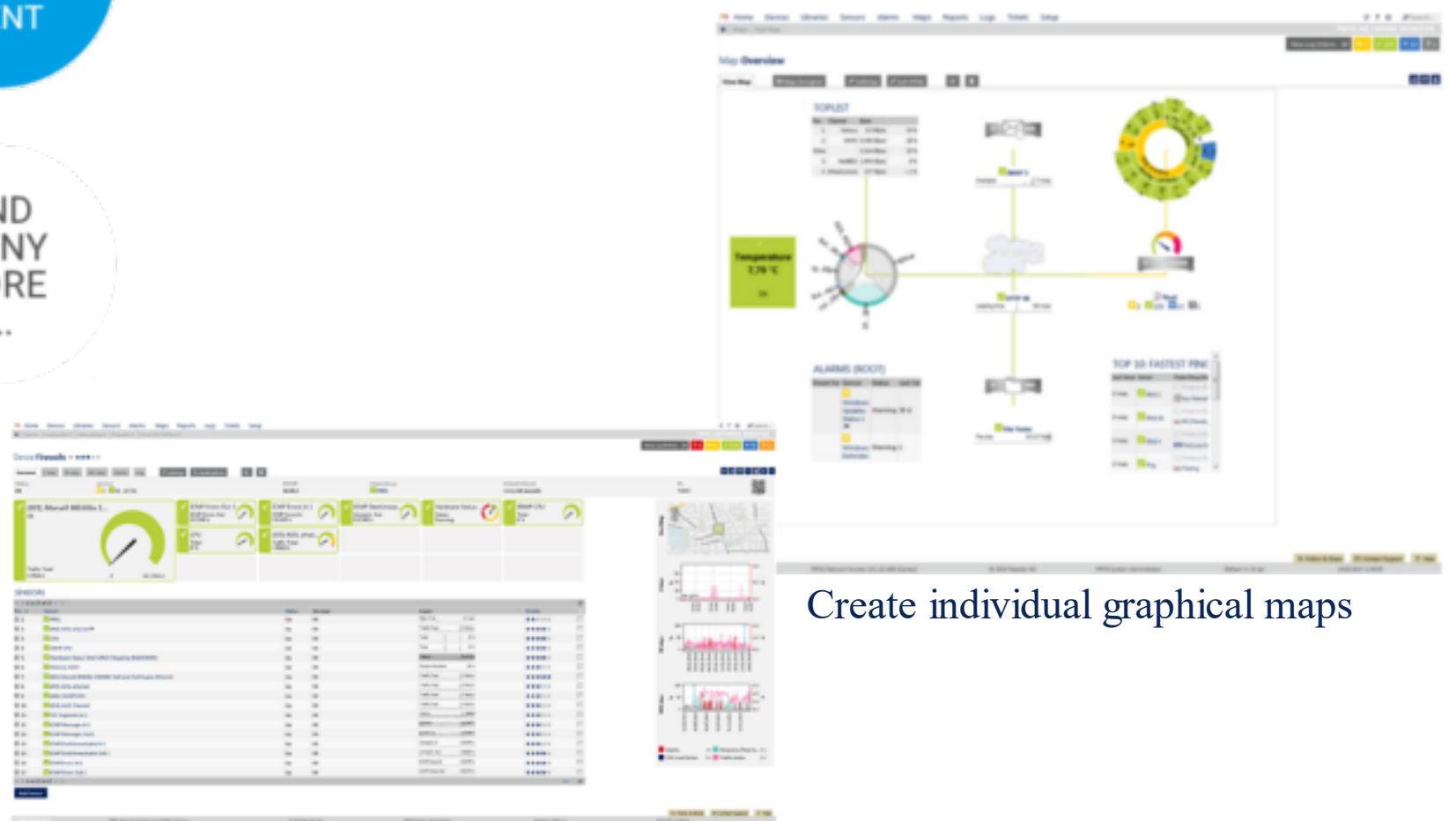
**Knowing when things break is good. Knowing before they break is even better**



- CLOUD SERVICES
- QUALITY OF SERVICES
- BANDWIDTH
- WEB PAGE
- UPTIME
- CPU LOAD
- MEMORY USAGE
- DISC USAGE
- ENVIRONMENT
- OK STATUS
- DATABASE REQUESTS
- AND MANY MORE

**PRTG monitors all systems, devices, traffic and applications of your IT infrastructure using these technologies**

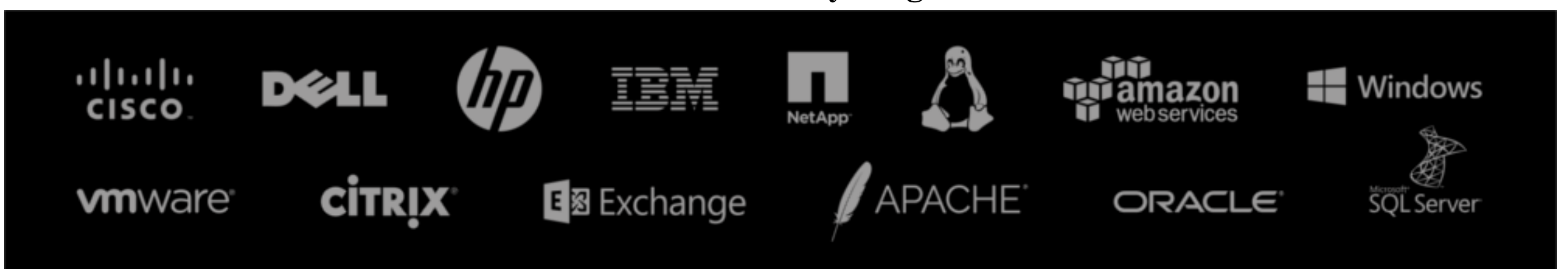
- SNMP: ready to use and custom options**
- WMI and Windows Performance Counters**
- SSH: for Linux/Unix and MacOS systems**
- Flows and Packet Sniffing**
- HTTP requests**
- Any REST API returning XML or JSON**
- Ping, SQL and many more**



Create individual graphical maps

All Servers features ar a glance

## Monitor Everything !





**PRTG comes with all the features you need, plus more your IT infrastructure won't want to live without.**

## OUR FEATURES



### FLEXIBLE ALERTING

PRTG comes with 10 built-in technologies such as email, push, SMS text messages, play alarm audio files, or triggering an EXE file or HTTP requests.

Our free push notifications help you stay up to date when using your mobile device(s).

Adapt the notification system to suit your needs and schedule alerts (such as 'no low priority alerts at night'), or avoid alarm floods by using dependencies and acknowledging. You could even use our PRTG API to write your own notifications.



### SEVERAL USER INTERFACES

Full featured web interface: based on AJAX with high security standards, highly performant thanks to Single Page Application (SPA) technology, and optimally adjusting to your systems by its responsive design

Enterprise Console: native Windows application especially for several PRTG installations

Apps for iOS and Android

All user interfaces allow SSL-secured local and remote access and can be used simultaneously.



### CLUSTER FAILOVER SOLUTION

It is always better to be safe than sorry. PRTG Network Monitor allows failover tolerant monitoring. One single failover is included in every license!

Automatic failover handling: if the primary master of the cluster is not connected or is down, another node immediately takes over all its responsibilities, including the sending of notifications.

Take advantage of multiple points of presence monitoring: all nodes monitor all sensors all the time, so you can compare response times from different locations in the network (LAN/WAN/VPN).



### MAPS AND DASHBOARDS

Visualize your network using real time maps with live status information.

Create dashboards with the PRTG map designer and integrate all your network components with more than 300 different map objects - from device and status icons to traffic charts and top lists. Individualize your map using custom HTML.

Share your map providing its unique URL on a dashboard within your company LAN only, or even outside your company.



### DISTRIBUTED MONITORING

Monitor several networks in different locations and separated networks within your company (e.g. DMZ and LAN) with PRTG Remote Probes.

Get the overview in one central PRTG core installation.

You can also use remote probes to distribute monitoring load.

Each PRTG license includes unlimited remote probes.

As MSP you can monitor your customer's networks and increase the quality of service.



### IN-DEPTH REPORTING

Get the numbers, statistics, and graphs of your specific monitoring data or configuration.

Export your historic monitoring data as PDF, HTML, XML, or CSV files and further process your monitoring data.

Run reports on demand or schedule regular reports (daily, weekly, monthly).

## Unified Monitoring Solution

